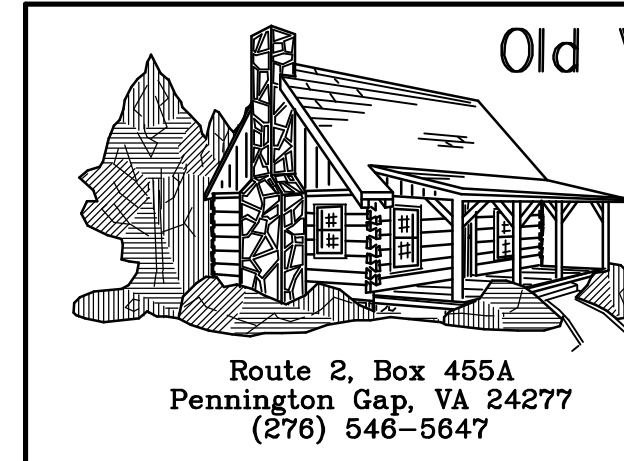


FIRST FLOOR PLAN

NOTES:

- 1.) WINDOWS SIZES IN SLEEPING ROOMS ARE DESIGNED TO BE THE LIFT OUT (REMOVABLE) TYPE UNITS WHICH COMPLY WITH SECTION R 310 EMERGENCY EGRESS OF THE 2003 INTERNATIONAL RESIDENTIAL CODE.
- 2.) ALL INTERIOR PARTITIONS ARE 4" WIDE UNLESS OTHERWISE NOTED.
- 3.) FIREPLACE & HEARTH TO BE CONSTRUCTED IN COMPLIANCE WITH LOCAL BUILDING CODE. SIZE TO BE DETERMINED BY OWNER.
- 4.) OLD VIRGINIA HAND HEWN LOG HOMES, INC. ASSUMES NO RESPONSIBILITY FOR ANY CHANGES TO THIS PLAN UNLESS SUBMITTED TO THIS OFFICE IN WRITING.
- 5.) ALL EXTERIOR WINDOWS AND DOORS ARE DESIGNED FOR 1" x 6" TRIM.

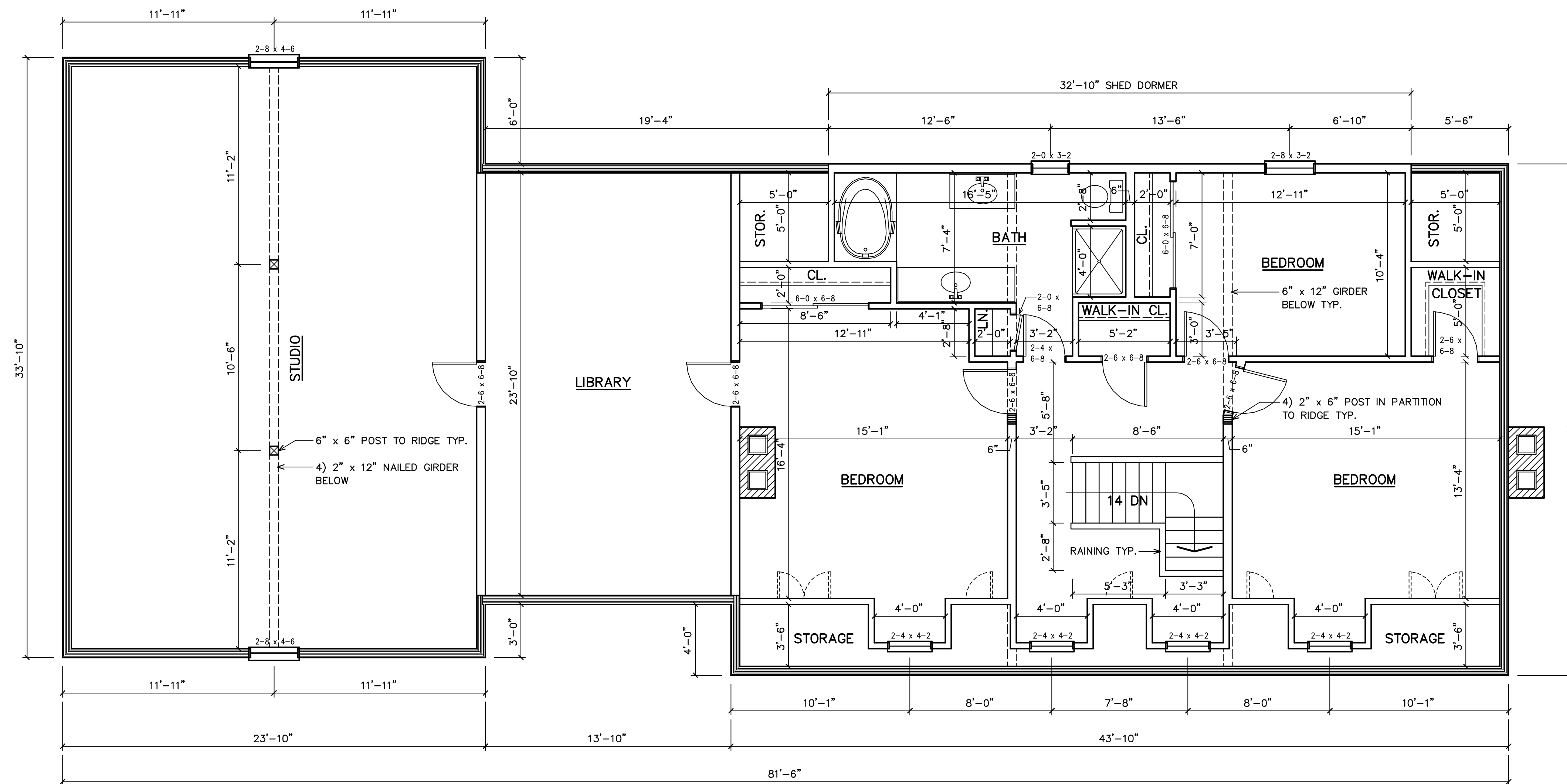
CAUTION !!!!!
 DO NOT USE DIMENSIONS ON THIS PAGE FOR FOUNDATION!
 REFER TO FOUNDATION SHEET FOR FOUNDATION DIMENSIONS AND ABIDE BY ALL THAT IS NOTED.
 CHECK WITH LOCAL BUILDING CODES BEFORE STARTING CONSTRUCTION.



Old Virginia Hand Hewn Log Homes, Inc.

Route 2, Box 455A
 Pennington Gap, VA 24277
 (276) 546-5647

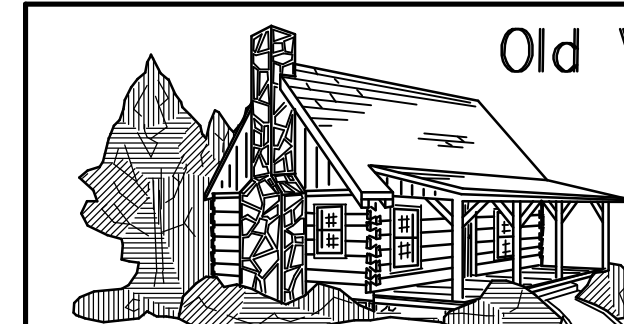
SCALE 1/4"=1'-0"	DRAWN BY JDR	APPRVD.
DATE 7-30-96	REV 7-7-99	
PLAN FOR:		
FIRST FLOOR PLAN		
WILLIAMSBURG		SHEET 4 of 8



SECOND FLOOR PLAN

NOTES:

- 1.) WINDOWS SIZES IN SLEEPING ROOMS ARE DESIGNED TO BE THE LIFT OUT (REMOVABLE) TYPE UNITS WHICH COMPLY WITH SECTION R 210.2 EMERGENCY EGRESS OF THE BUILDING CODES.
- 2.) ALL INTERIOR PARTITIONS ARE 4" WIDE UNLESS OTHERWISE NOTED.
- 3.) FIREPLACE & HEARTH TO BE CONSTRUCTED IN COMPLIANCE WITH LOCAL BUILDING CODE. SIZE TO BE DETERMINED BY OWNER.
- 4.) OLD VIRGINIA HAND HEWN LOG HOMES, INC. ASSUMES NO RESPONSIBILITY FOR ANY CHANGES TO THIS PLAN UNLESS SUBMITTED TO THIS OFFICE IN WRITING.
- 5.) ALL EXTERIOR WINDOWS AND DOORS ARE DESIGNED FOR 1" x 6" TRIM.



Old Virginia Hand Hewn Log Homes, Inc.

Route 2, Box 455A
Pennington Gap, VA 24277
(576) 546-5647

SCALE 1/4"=1'-0"	DRAWN BY JDR	APPRVD.
DATE 7-30-96	REV 7-7-99	
PLAN FOR:		
SECOND FLOOR PLAN		
WILLIAMSBURG		SHEET 5 of 8