

FIRST FLOOR PLAN

NOTES:

- 1.) WINDOWS SIZES IN SLEEPING ROOMS ARE DESIGNED TO BE THE LIFT OUT (REMOVABLE) TYPE UNITS WHICH COMPLY WITH SECTION R 310.2 EMERGENCY EGRESS OF THE 1995 CABO ONE AND TWO FAMILY DWELLING CODE.
- 2.) ALL INTERIOR PARTITIONS ARE 4" WIDE UNLESS OTHERWISE NOTED.
- 3.) FIREPLACE & HEARTH TO BE CONSTRUCTED IN COMPLIANCE WITH LOCAL BUILDING CODE. SIZE TO BE DETERMINED BY OWNER.
- 4.) OLD VIRGINIA HAND HEWN LOG HOMES, INC. ASSUMES NO RESPONSIBILITY FOR ANY CHANGES TO THIS PLAN UNLESS SUBMITTED TO THIS OFFICE IN WRITING.
- 5.) ALL EXTERIOR WINDOWS AND DOORS ARE DESIGNED FOR 1" x 6" TRIM.

CAUTION !!!!!

DO NOT USE DIMENSIONS ON THIS PAGE FOR FOUNDATION! REFER TO FOUNDATION SHEET FOR FOUNDATION DIMENSIONS AND ABIDE BY ALL THAT IS NOTED.
CHECK WITH LOCAL BUILDING CODES BEFORE STARTING CONSTRUCTION.

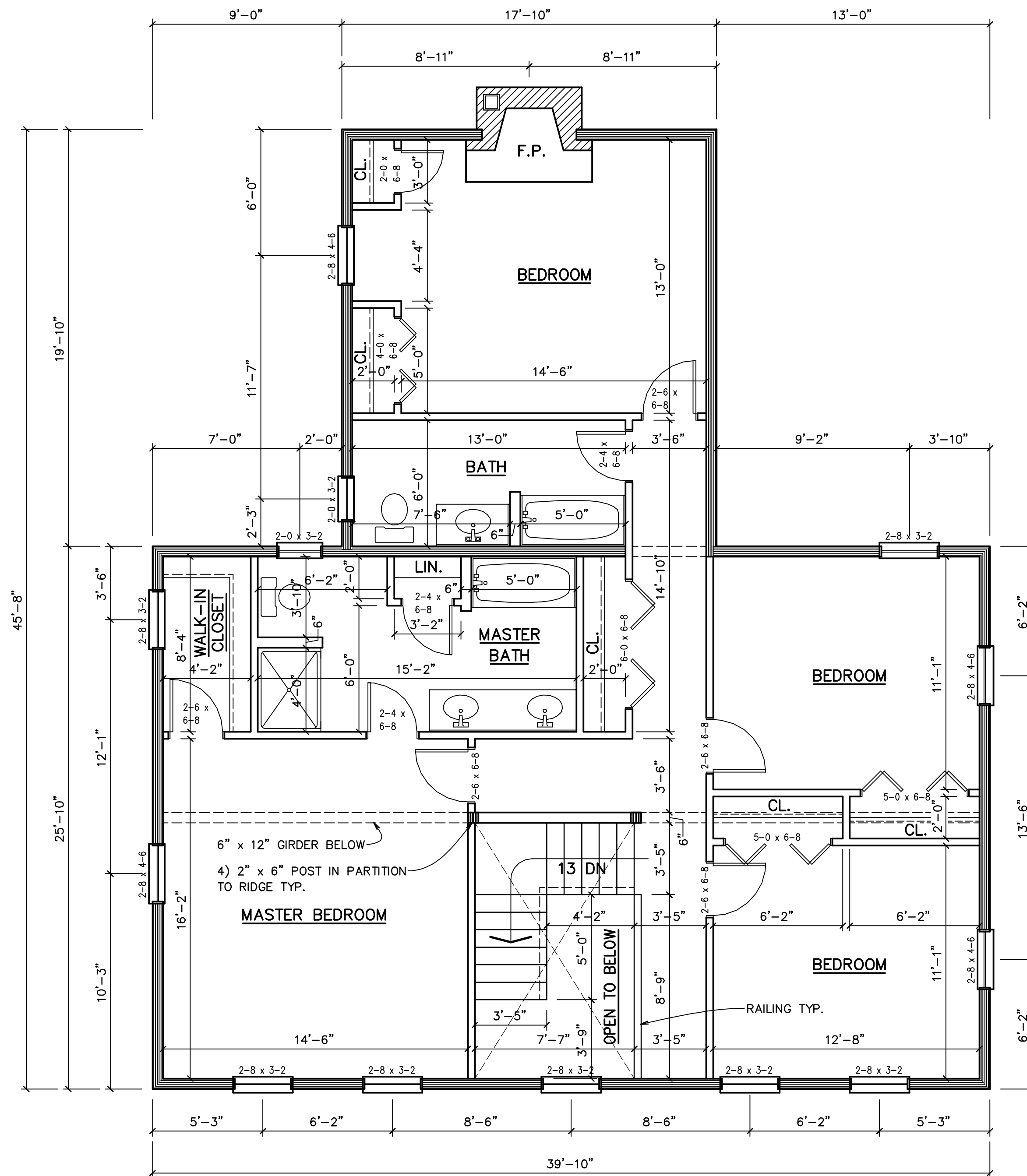
This document, including the ideas and designs incorporated herein, as an instrument of professional service, is the property of Old Virginia Hand Hewn Log Homes, Inc. and may not be used in whole or in part for construction other than Old Virginia Hand Hewn Log Homes, Inc.



Old Virginia Hand Hewn Log Homes, Inc.

Route 2, Box 455A
Pennington Gap, VA 24277
(276) 546-5647

SCALE: 1/4"=1'-0"	DRAWN BY: JDR	APPRVD:
DATE: 1-7-99	REV: 7-7-99	
PLAN FOR:		
FIRST FLOOR PLAN		
STONE MOUNTAIN		SHEET 4 of 8

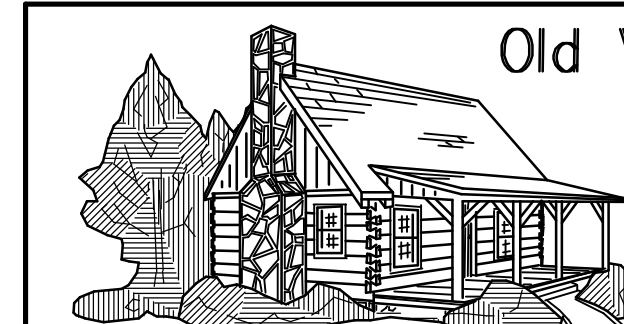


SECOND FLOOR PLAN

NOTES:

- 1.) WINDOWS SIZES IN SLEEPING ROOMS ARE DESIGNED TO BE THE LIFT OUT (REMOVABLE) TYPE UNITS WHICH COMPLY WITH SECTION R 310.2 EMERGENCY EGRESS OF THE 1995 CABO ONE AND TWO FAMILY DWELLING CODE.
- 2.) ALL INTERIOR PARTITIONS ARE 4" WIDE UNLESS OTHERWISE NOTED.
- 3.) FIREPLACE & HEARTH TO BE CONSTRUCTED IN COMPLIANCE WITH LOCAL BUILDING CODE. SIZE TO BE DETERMINED BY OWNER.
- 4.) OLD VIRGINIA HAND HEWN LOG HOMES, INC. ASSUMES NO RESPONSIBILITY FOR ANY CHANGES TO THIS PLAN UNLESS SUBMITTED TO THIS OFFICE IN WRITING.
- 5.) ALL EXTERIOR WINDOWS AND DOORS ARE DESIGNED FOR 1" x 6" TRIM.

This document, including the ideas and designs incorporated herein, as an instrument of professional service, is the property of Old Virginia Hand Hewn Log Homes, Inc. and may not be used in whole or in part for construction other than Old Virginia Hand Hewn Log Homes, Inc.



Old Virginia Hand Hewn Log Homes, Inc.

Route 2, Box 455A
 Pennington Gap, VA 24277
 (276) 546-5647

SCALE 1/4"=1'-0"	DRAWN BY JDR	APPRVD.
DATE 1-7-99	REV 7-7-99	
PLAN FOR:		
SECOND FLOOR PLAN		
STONE MOUNTAIN		SHEET 5 of 8